



Coating Technologies

Vacuum Solutions
for Challenging Requirements



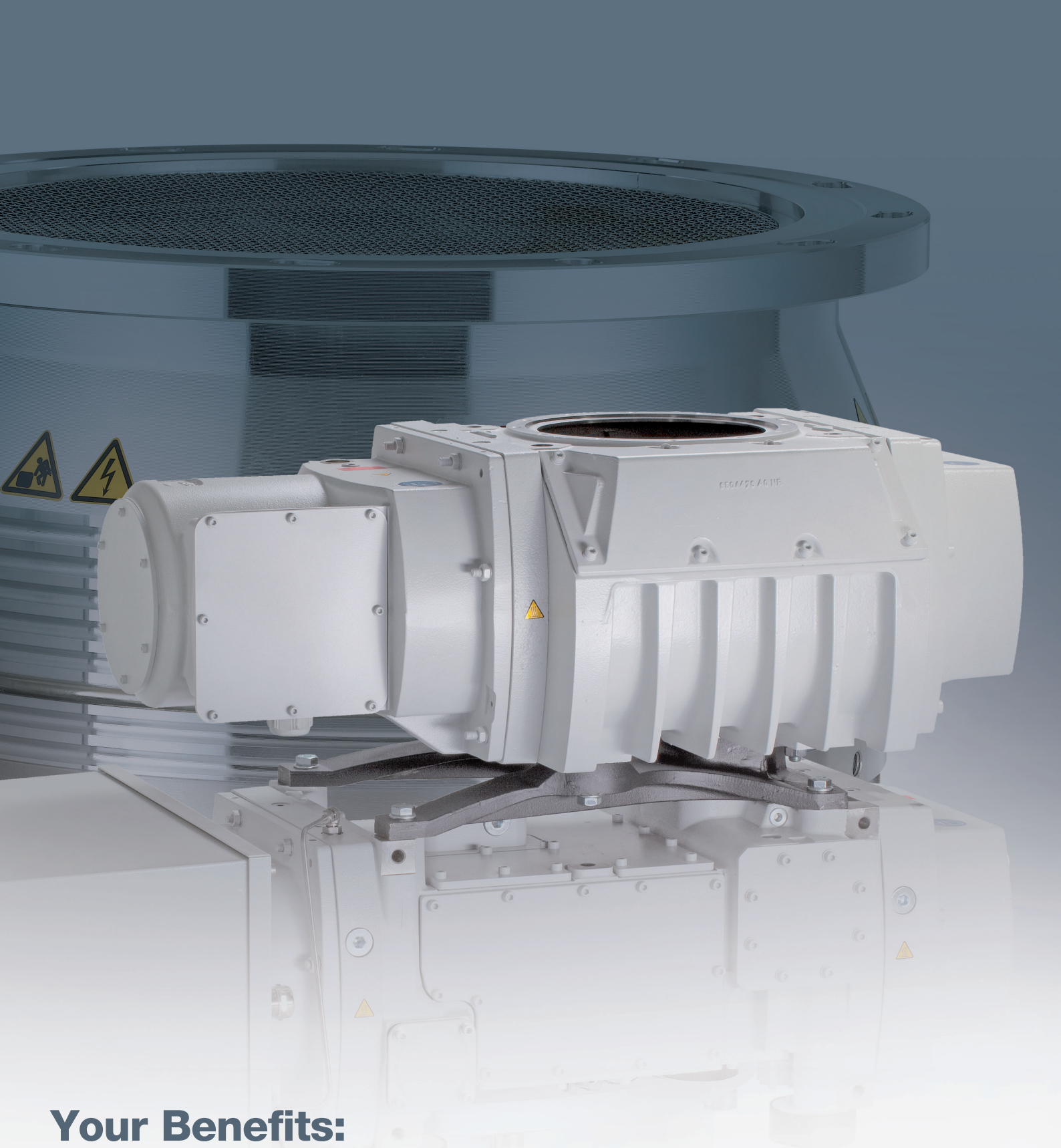
Our Commitment:

Leybold leads the way in the development of total vacuum solutions for all coating applications. Our expertise is unequalled in understanding the technical requirements and support needs of your business.

The result is an optimized range of standard components featuring compact designs, supreme technical standards and outstanding reliability. We also offer compact and smart vacuum solutions consisting of high vacuum, booster and rough vacuum pump combinations, as well as control devices, if required.

Our system design specialists are just a call away!





Your Benefits:

We will tailor products to fit your specific requirements. Our ability to modify performance, dimensions, system integration and central parameters provides you with competitive advantages in this demanding market place.

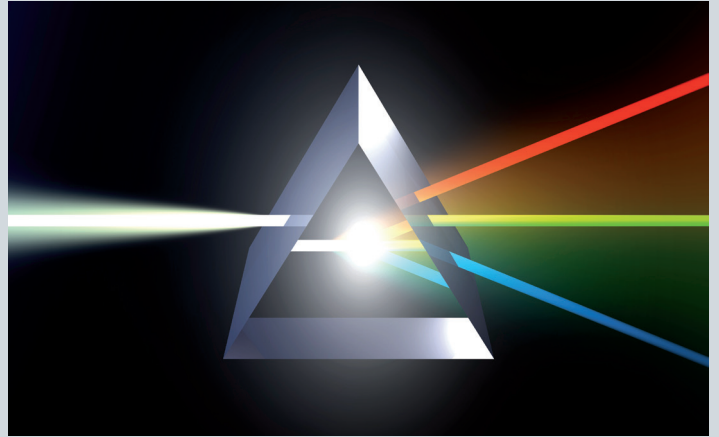
Leybold solutions and single components guarantee highest robustness, reliability, pumping speed, gas throughput, and lowest noise level.

Optimized power consumption and footprint further help to reduce your cost of ownership, increase your uptime and yield with high impact on time to market. We enable your success.

Coating Technologies

Vacuum Solutions for Ch

Ophthalmic / Precision



Thin films are mostly invisible yet highly effective.

They are used, for example, on architectural glass as thermal insulation, on lenses to prevent glare or scratching, on laser mirrors to intensify the reflection of light, as well as on tools and ball bearings to prevent wear.

None of these would be possible without vacuum technology and specially designed vacuum components.

Apart from the demanding engineering requirements, safety aspects, reliability, investment costs and cost of ownership need to be taken into account in choosing the optimal pump design.

Vacuum systems are designed and qualified generally in close cooperation with manufacturers of coating systems, drawing on the experience gained from longterm relationship and cooperation with leading customers.



Challenging Requirements.

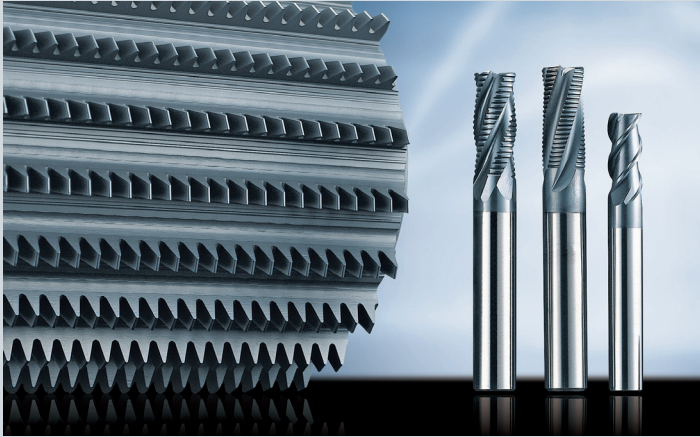
Glass / WEB



Display / OLED



Thin films are mostly invisible but yet



Wear Protection / Decorative



LED

Continuous contact with customer specialists ensures that Leybold stays in touch with the latest market and technology trends.

Innovative product development and a high level of application consulting and know how are essential for future success.

Perfect vacuum for perfect coatings

highly effective.



Parylene



Photovoltaic



Leybold vacuum pumps, components and services are the best choice for your coating applications:

Dry vacuum pumps - DRYVAC, SCREWLINE, LEYVAC, VARODRY

Roots vacuum pumps - RUVAC

Rotary vane vacuum pumps - SOGEVAC, TRIVAC

Turbomolecular pumps

- Magnetical levitated TURBOVAC MAG
- Mechanical levitated TURBOVAC

Helium leak detecting systems - PHOENIX

- VARIO: full flexibility without backing pump
- QUADRO: the premium for all industries
- MAGNO: the working horse

Cryopumps, cold heads - COOLVAC

Oil diffusion pumps - LEYBOJET, DIP, OB

Valves, Fittings, Gauges

Vacuum systems and customized solutions from dry or oil sealed backing pumps and roots blowers

Our Product Portfolio

| | Ophthalmic, Precision Optics | Glass WEB | Display OLED | Wear Protection, Decorative | LED | Parylene | Photovoltaic |
|------------------------------|------------------------------------|--------------|-----------------|-----------------------------------|-----|----------|--------------|
| Forevacuum pumps | | | | | | | |
| <i>Rotary vane pumps</i> | | | | | | | |
| TRIVAC | + | + | | + | + | | + |
| SOGEVAC | + | + | + | + | + | | + |
| <i>Roots blower</i> | | | | | | | |
| RUVAC | + | + | + | + | + | + | + |
| <i>Dry compressing pumps</i> | | | | | | | |
| SCREWLINE | | + | + | + | | | + |
| DRYVAC | + | + | + | + | + | | + |
| LEYVAC | + | | + | + | | | + |
| VARODRY | + | | | + | | + | |
| High vacuum pumps | | | | | | | |
| <i>Turbomolecular Pumps</i> | | | | | | | |
| TURBOVAC | + | | | | | | |
| TURBOVAC MAG | + | + | + | + | + | | + |
| <i>Cryo Pumps</i> | | | | | | | |
| COOLVAC | + | | + | | | | + |
| <i>Diffusion pumps</i> | | | | | | | |
| DIP / LEYBOJET / OB | + | + | | + | + | | |
| Vacuum solutions | | | | | | | |
| Pump systems / Engineering | + | + | + | + | + | | + |
| Gauges | | | | | | | |
| CTRN | + | | + | | + | | + |
| DI / DU | | + | | + | | | + |
| TTRN / TTR 101 | + | + | + | + | + | | + |
| PTRN / ITR 90 | + | + | + | + | + | | + |
| GRAPHIX | + | + | + | + | + | | + |
| Leak detectors | | | | | | | |
| PHOENIX | + | + | + | + | + | + | + |
| Accessories | | | | | | | |
| Valves | + | + | + | + | + | + | + |
| Fittings | + | + | + | + | + | + | + |
| Services | | | | | | | |
| | + | + | + | + | + | + | + |



Pioneering products. Passionately applied.